

SES no.070; 表紙, 目次ほか

雑誌名	Senri Ethnological Studies
巻	70
発行年	2006-12-28
URL	http://hdl.handle.net/10502/00009438

Senri Ethnological Studies no. 70

Updating the San: Image and Reality of an African People in the 21st Century

Edited by
Robert K. HITCHCOCK
Kazunobu IKEYA
Megan BIESELE
Richard B. LEE



National Museum
of Ethnology

Senri Expo Park, Suita, Osaka, Japan
Phone 06-6876-2151

Senri Ethnological Studies

Senri Ethnological Studies is published by the National Museum of Ethnology, Osaka, as an irregular series. The volumes present definitive anthropological and ethnological studies written by the Museum staff, research associates, and affiliated guest scholars.

General editor

Makio Matsuzono

Associate editors

Katsumi Tamura

Toshio Matsuyama

Toshio Asakura

Yoshio Sugimoto

Shiro Sasaki

Kenji Yoshida

For information about previous issues see back page and the museum website:

<http://www.minpaku.ac.jp/> (Research: publications)

For enquiries about the series, please contact:

Publications Unit, National Museum of Ethnology

Senri Expo Park, Suita, Osaka, 565-8511 Japan

Fax: +81 6 6878-7503, Email: hensyu@idc.minpaku.ac.jp

A limited number of free copies are available for educational and research purposes.

Senri Ethnological Studies No. 70

Updating the San: Image and Reality of an African People in the 21st Century

Edited by

Robert K. HITCHCOCK

Kazunobu IKEYA

Megan BIESELE

Richard B. LEE

National Museum of Ethnology, Osaka

2006

Published by the National Museum of Ethnology
Senri Expo Park, Suita, Osaka 565-8511, Japan

©2006 by The National Museum of Ethnology, Osaka
All rights reserved. Printed in Japan by Yubunsha Co., Ltd.,

Publication Data

Senri Ethnological Studies 70
Updating the San: Image and Reality of an African People in the 21st Century
Edited by R. K. Hitchcock, K. Ikeya, M. Bieseles and R. B. Lee. P.299, 16mm
Includes bibliographical references.

ISSN 0387-6004

ISBN 4-901906-43-7 C3039

1. San 2. Hunter-gatherer 3. Land 4. Development 5. Africa
I. Hitchcock, Robert K. II. Ikeya, Kazunobu. III. Bieseles, Megan IV. Lee, Richard B.

CONTENTS

Preface

Robert K. Hitchcock, Kazunobu Ikeya, Megan Biesele,
and Richard B. Lee i

- 1 Introduction: Updating the San, Image and Reality of an African People in the
Twenty First Century
Robert K. Hitchcock, Kazunobu Ikeya, Megan Biesele,
and Richard B. Lee 1

Health, Body and Perception

- 2 Confounding Conventional Wisdom: The Ju/'hoansi and HIV/AIDS
Richard B. Lee and Ida Susser 45
- 3 "Our Health Was Better in the Time of Queen Elizabeth": The Importance of
Land to the Health Perception of the Botswana San
Benedicte Ingstad and Per Fugelli 61
- 4 Changes in Co-survivorship of Adult Children and Parents: Ju/'hoansi of
Botswana in 1968 and 1988
Patricia Draper and Nancy Howell 81
- 5 Explaining Pathways in the Central Kalahari
Akira Takada 101

Development and Social Changes

- 6 Drinking, Fighting, and Healing: San Struggles for Survival and Solidarity in
the Omaheke Region, Namibia
Renee Sylvain 131
- 7 Ju/'hoan Writers and Readers: Developing a Literate Tradition for Long-Term
Language Preservation
Megan Biesele 151
- 8 The San Culture and Education Center !Kha ttu: A Process of Heritage
Restitution
Irene Staehelin 163

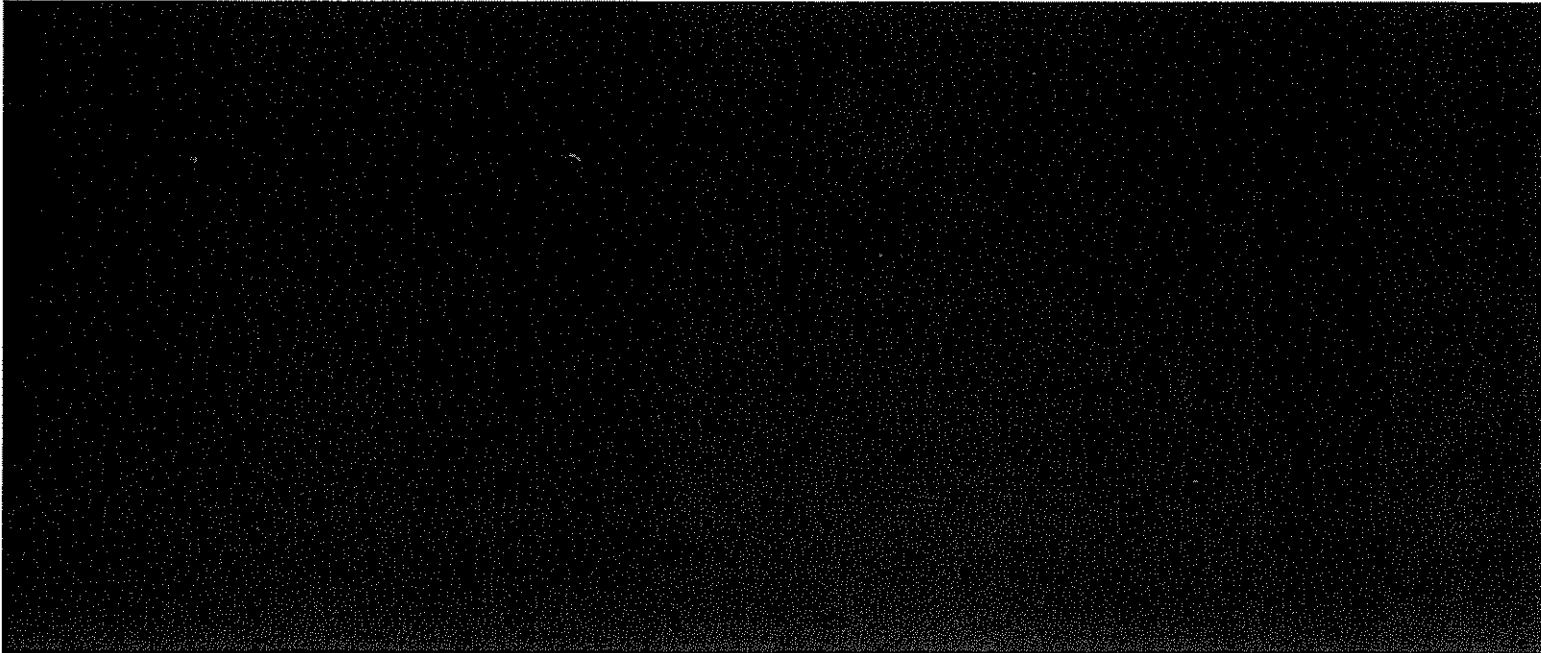
9	San Development and Challenges in Development Cooperation Sidsel Saugestad	171
---	-------------------------------------------------------------------------------------	-----

Land, Identity and Human Rights

10	Land, Livestock, and Labor in Rural Botswana: The Western Sandveld Region of Central District as a Case Study Alec Campbell, Michael Main, and Robert K. Hitchcock	183
11	'We Are the Owners of the Land': The San Struggle for the Kalahari and Its Resources Robert K. Hitchcock	229
12	Human Rights and Refugees with Special Reference to Southern Africa Art Hansen	257
13	The Thumb Piano and San Identity in Central Botswana Kazunobu Ikeya	273
	Index	285
	Acronyms and Abbreviations.....	295
	List of Contributors	297



The San groups in the study areas in this volume



ISSN 0387-6004
ISBN 4-901906-43-7
C3039